






GOAL

- Identify significant changes between the 2015 and 2018 IFC
- Apply code requirements to design, plan submittals and/or inspection.






OBJECTIVES

- Identify the differences between 2015 IFC and 2018 codes.
- Explain differences between current and previous code years.
- Identify changes in organization and code requirements.
- Identify design, plan review and inspection requirements.



Tips

- Guide to a successful class:
- Slides contain some text and iconic images to help you learn.
- Text and commentary is in the handout.
- Follow along in the course handout.
- Ask Questions, ask questions, ASK QUESTIONS!!!!



Course Icons



Addition



Deletion



Modification



Clarification



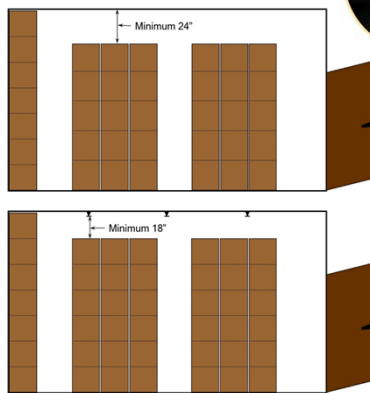
2018 IFC Significant Changes

LEARNING
center

Chapter 3

General Requirements

314 Ceiling Clearance for Indoor Storages



2018 IFC Significant Changes

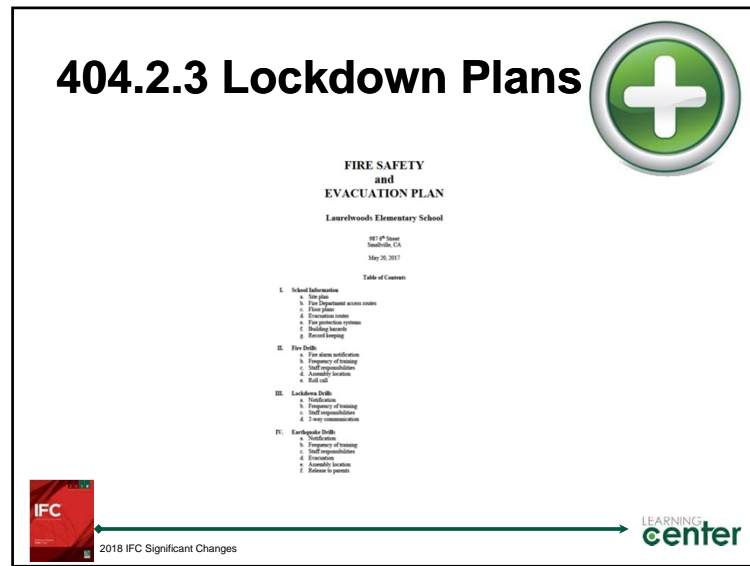
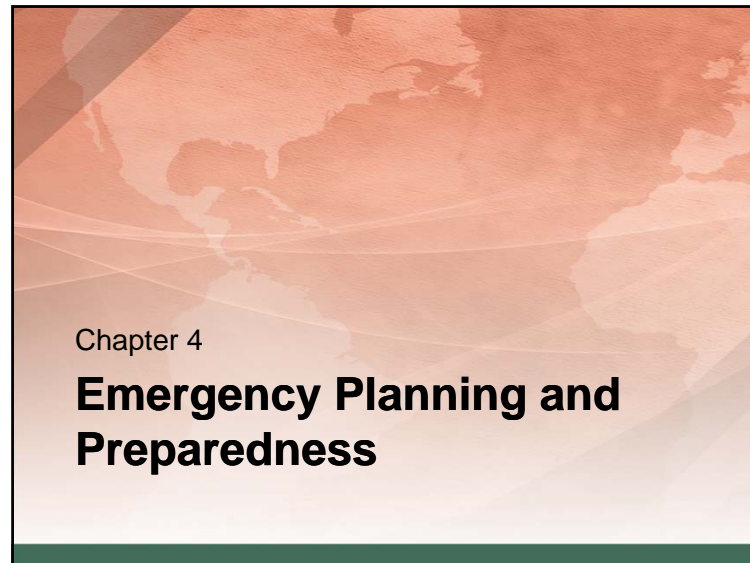
LEARNING
center

315.3.1 Outdoor Pallet Storage



2018 IFC Significant Changes

LEARNING
center



Section 603.3 Fuel-fired Appliances



TABLE 603-1 Maximum Capacity of Fuel Oil Based on Type of Tank and Automatic Sprinkler System Design

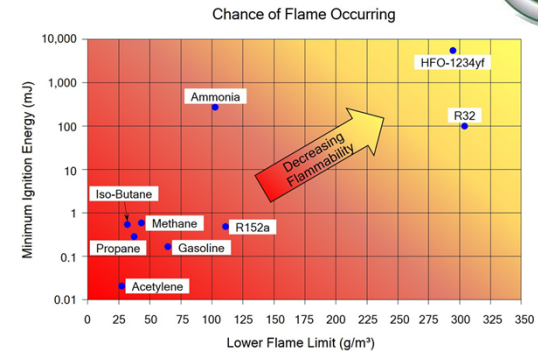
TANK DESIGN	NONSPRINKLERED BUILDING	FIRE SPRINKLERS PROVIDED IN THE ROOM	FIRE SPRINKLERS PROVIDED IN THE BUILDING
UL 80	660 gallons	660 gallons	660 gallons
UL 142	660 gallons	660 gallons	1,320 gallons
UL 2085	660 gallons	3,000 gallons	3,000 gallons



2018 IFC Significant Changes

LEARNING center

Section 605.13 Refrigerants with Lower Flammability Hazards



2018 IFC Significant Changes

LEARNING center

Section 608.3 Non-metallic Cooking Oil Storage Tanks



2018 IFC Significant Changes

LEARNING center

Chapter 8

Interior Finish, Decorative Materials and Furnishings

Section 807.1 Combustible Decorative Materials



2018 IFC Significant Changes

LEARNING
center

Section 807.4 Combustible Decorative Materials



2018 IFC Significant Changes

LEARNING
center

Chapter 9

Fire Protection and Live Safety Systems

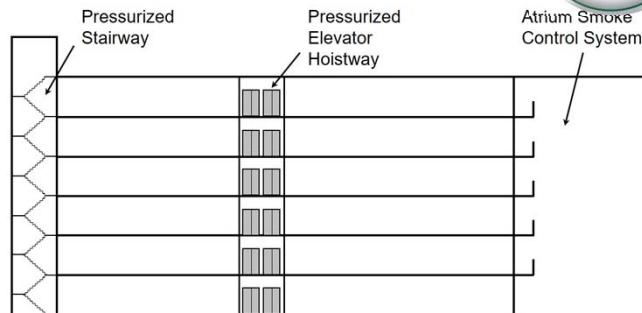
Section 901.4.6 Fire Pump and Sprinkler Riser Rooms



2018 IFC Significant Changes

LEARNING
center

901.6.2 Integrated Fire Protection System Testing



2018 IFC Significant Changes

LEARNING center

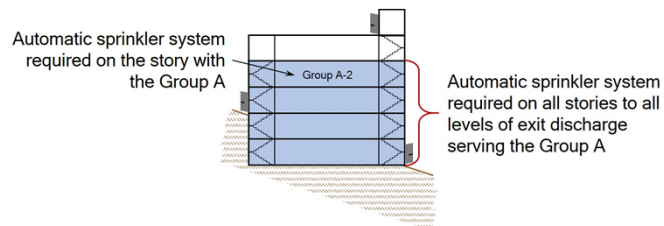
901.8.2 Removal of Occupant Use Hoselines



2018 IFC Significant Changes

LEARNING center

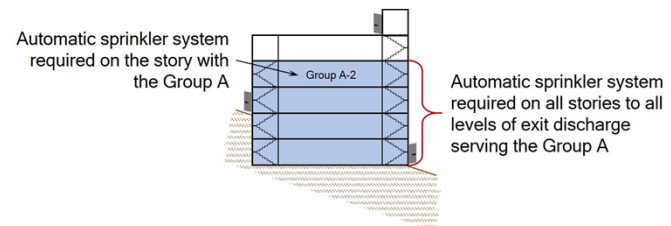
903.2.1 Sprinkler Protection of Spaces under Grandstands



2018 IFC Significant Changes

LEARNING center

903.2.3 Sprinkler Protection of Group E Occupancies



2018 IFC Significant Changes

LEARNING center

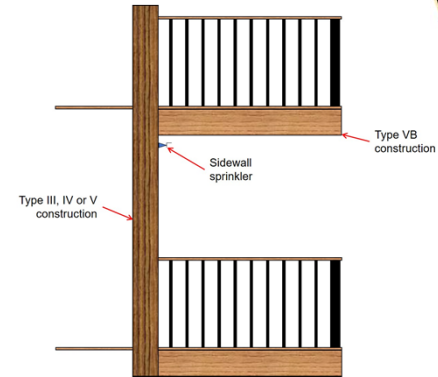
903.3.1.1.2 Sprinklers in Bathrooms in Group R-4 Occupancies



2018 IFC Significant Changes

LEARNING
center

903.3.1.2.1 Sprinkler Protection of Exterior Balconies and Decks



2018 IFC Significant Changes

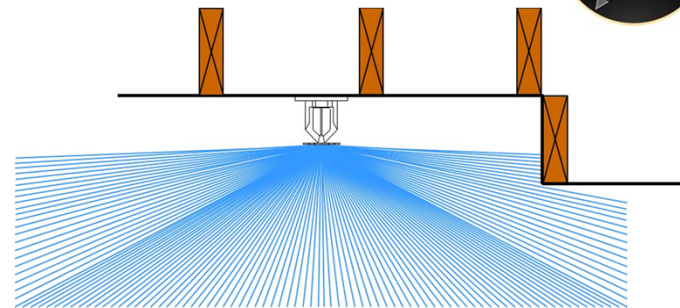
LEARNING
center

903.3.1.2.3 Sprinkler Protection of Group R Attic Spaces



2018 IFC Significant Changes

903.3.3 Sprinkler Obstructions



2018 IFC Significant Changes

LEARNING
center

904.12 Commercial Cooking Operations



2018 IFC Significant Changes

LEARNING
center

904.13 Domestic Cooking in Institutional Occupancies



2018 IFC Significant Changes

LEARNING
center

904.14 Aerosol Fire-extinguishing System Maintenance



2018 IFC Significant Changes

LEARNING
center

905.3.1 Standpipe Systems in Group B and E Occupancies



2018 IFC Significant Changes

LEARNING
center

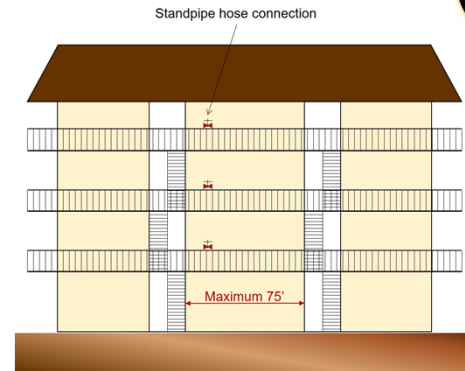
905.3.1 Occupant-Use Standpipe Systems



2018 IFC Significant Changes

LEARNING
center

905.4 Class I Standpipe Hose Connections



2018 IFC Significant Changes

LEARNING
center

905.11 Locking Caps on Standpipe Outlets



2018 IFC Significant Changes

LEARNING
center

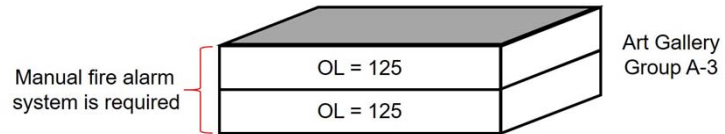
906.1 Portable Fire Extinguishers



2018 IFC Significant Changes

LEARNING
center

907.1.2 Fire Alarm Constructive Documents



2018 IFC Significant Changes

LEARNING center

907.2.10 Fire Alarm Systems in Group R-4 Occupancies



2018 IFC Significant Changes

LEARNING center

907.5.2.2.4 Emergency Voice/Alarm Communication System Captions



2018 IFC Significant Changes

LEARNING center

910.5 Maintenance of Smoke and Heat Removal Equipment



2018 IFC Significant Changes

LEARNING center

916 Gas Detection Systems



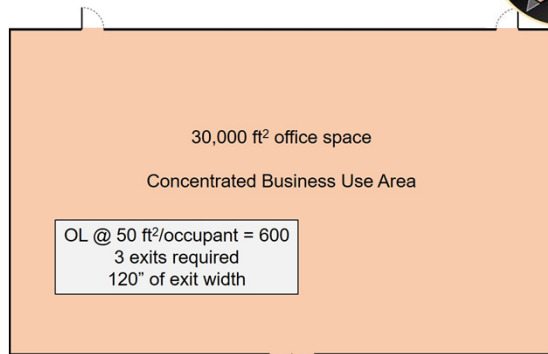
2018 IFC Significant Changes

LEARNING center

Chapter 10

Means of Egress

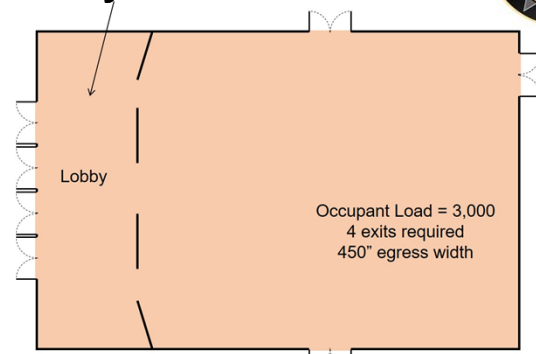
1004.8 Occupant Load Calculation in Concentrated Business Use Area



2018 IFC Significant Changes

LEARNING center

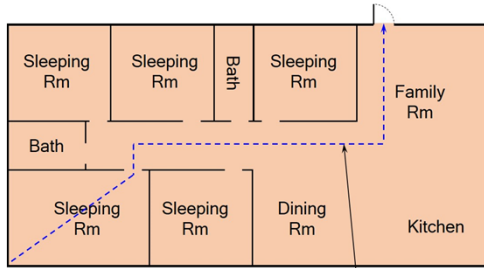
1006.2.1, Table 1006.2.1 Spaces with One Exit or Exit Access Doorway



2018 IFC Significant Changes

LEARNING center

1006.2.2.6, Table 1006.2.1, Table 1017.2 Groups R-3 and R-4 Protected with NFPA 13D Sprinkler System



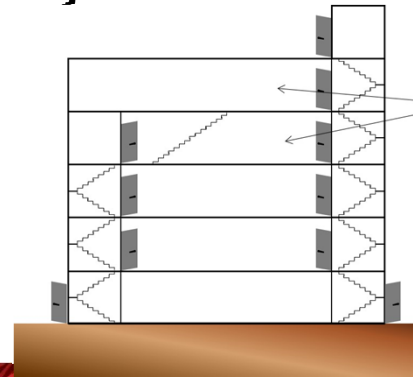
Exit access travel distance $\leq 75'$



2018 IFC Significant Changes

LEARNING center

1006.3 Exits on Adjacent Stories



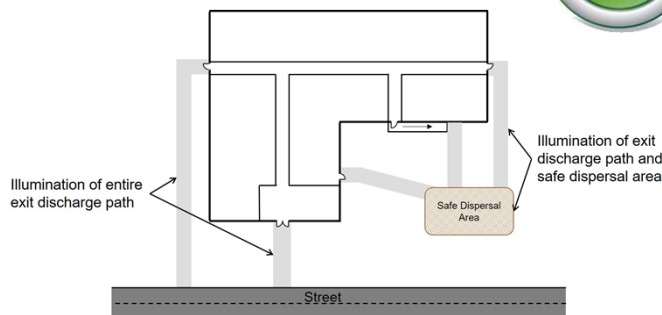
Number of exits from each story based on occupant load of that story



2018 IFC Significant Changes

LEARNING center

1008.2.3 Exit Discharge



2018 IFC Significant Changes

LEARNING center

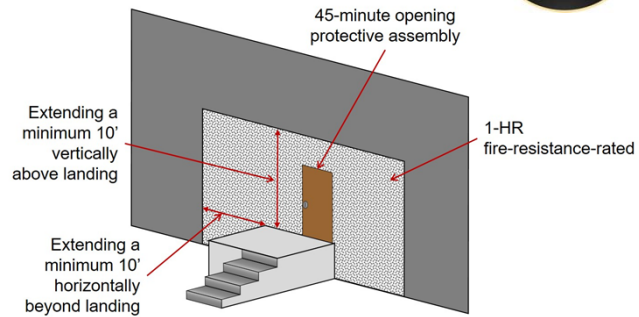
1008.3.5, 1008.2.2 Emergency Illumination in Group I-2



2018 IFC Significant Changes

LEARNING center

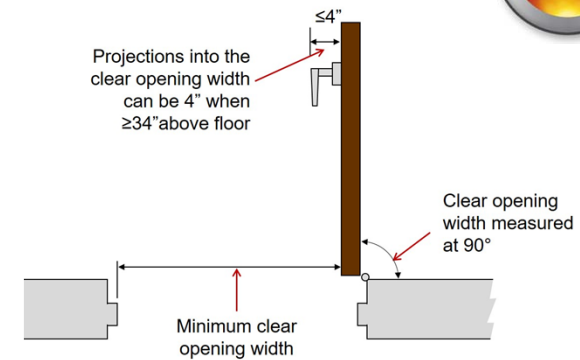
1009.7.2 Protection of Exterior Areas of Assisted Rescue



2018 IFC Significant Changes

LEARNING center

1010.1.1 Size of Doors



2018 IFC Significant Changes

LEARNING center

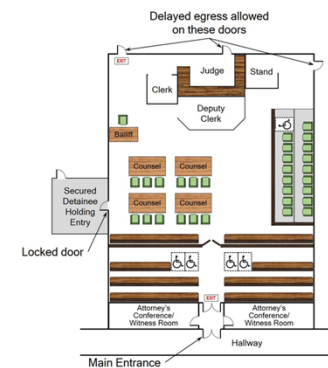
1010.1.4.4 Locking arrangements in educational occupancies



2018 IFC Significant Changes

LEARNING center

1010.1.9.8, 1010.1.9.8.1 Delayed Egress



2018 IFC Significant Changes

LEARNING center

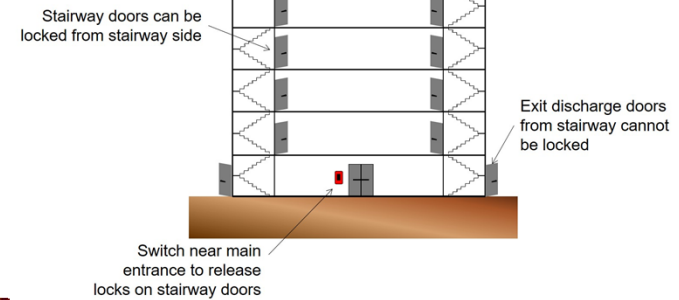
1010.1.9.9 Electrically Locked Egress Doors



2018 IFC Significant Changes

LEARNING
center

1010.1.9.12 Locks on Stairway Doors



2018 IFC Significant Changes

LEARNING
center

1010.1.10 Panic Hardware and Fire Exit Hardware



2018 IFC Significant Changes

LEARNING
center

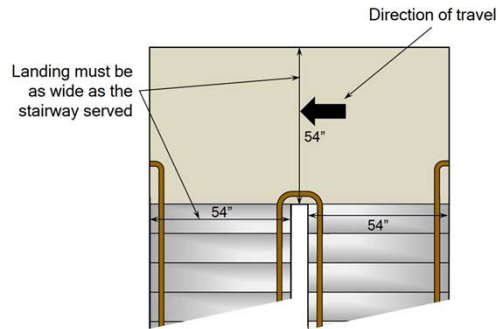
1010.3.2 Security Access Turnstiles



2018 IFC Significant Changes

LEARNING
center

1011.6 Stairway Landings



2018 IFC Significant Changes

LEARNING
center

1013.2 Floor Level Exit Signs in Group R-1



2018 IFC Significant Changes

LEARNING
center

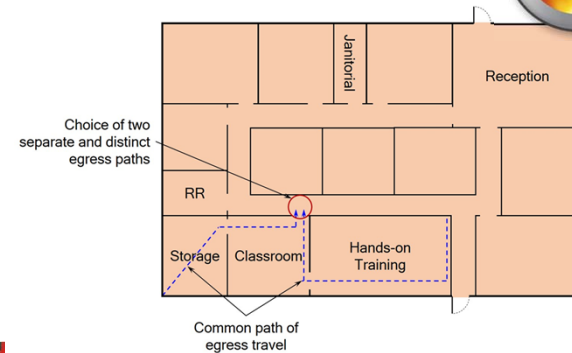
1015.6, 1015.7 Fall Arrest for Rooftop Equipment



2018 IFC Significant Changes

LEARNING
center

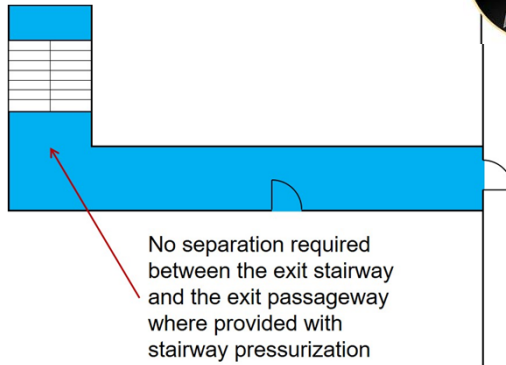
1017.3 Common Path of Egress Travel



2018 IFC Significant Changes

LEARNING
center

1023.3.1 Stairway Extension



No separation required between the exit stairway and the exit passageway where provided with stairway pressurization



2018 IFC Significant Changes

LEARNING center

1023.5, 1024.6 Exit Stairway and Exit Passageway Penetrations



2018 IFC Significant Changes

LEARNING center

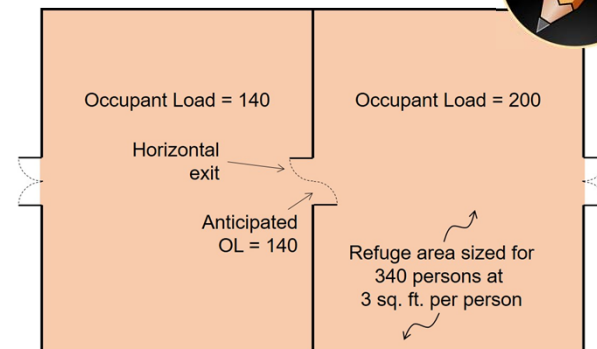
1025.1 Luminous Egress Path Marking in Group I Occupancies



2018 IFC Significant Changes

LEARNING center

1026.4 Areas for Horizontal Exits



2018 IFC Significant Changes

LEARNING center

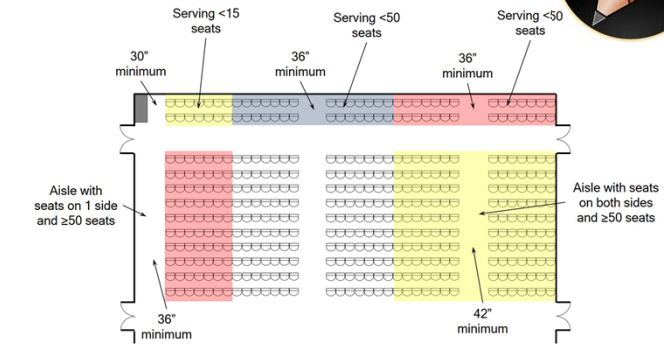
1029.6 Open-air Assembly Seating



2018 IFC Significant Changes

LEARNING center

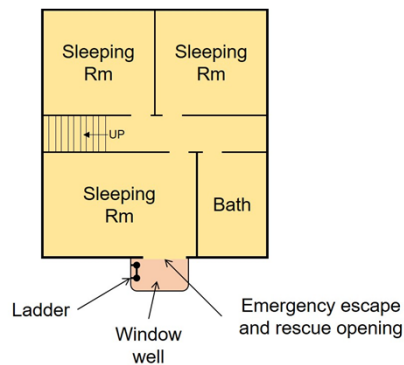
1029.9.1 Minimum Aisle Width



2018 IFC Significant Changes

LEARNING center

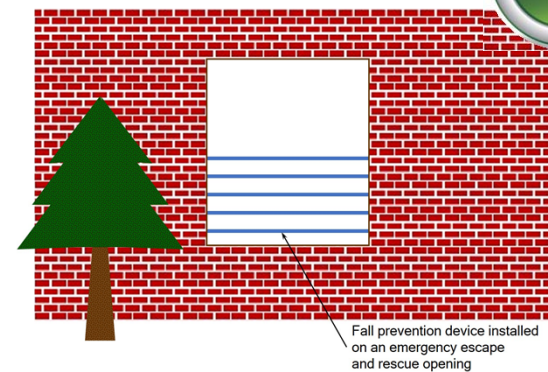
1030.1 Emergency Escape and Rescue Openings



2018 IFC Significant Changes

LEARNING center

1030.1.1 Operation of Emergency Escape and Rescue Openings



2018 IFC Significant Changes

LEARNING center

1031.2.2 Locking Arrangements in Existing Educational Occupancies



2018 IFC Significant Changes

LEARNING center

1031.4 Exit Signs in Existing Buildings



2018 IFC Significant Changes

LEARNING center

1031.10 Inspection and Testing of Emergency Egress Lighting



2018 IFC Significant Changes

LEARNING center

Chapter 11

Construction Requirements for Existing Buildings

1103.5.1 Sprinkler Protection of Existing Group A-2 Occupancies



2018 IFC Significant Changes

LEARNING
center

1103.9 Carbon Monoxide Alarms in Existing Buildings



2018 IFC Significant Changes

LEARNING
center

1104.16.2 Wall Openings Adjacent to Fire Escapes



2018 IFC Significant Changes

LEARNING
center

1105.5.4 Fire-protection-rated Doors in Existing Group I-2



2018 IFC Significant Changes

LEARNING
center

Discussion Activity



2018 IFC Significant Changes

LEARNING
center

Chapter 12

Energy Systems

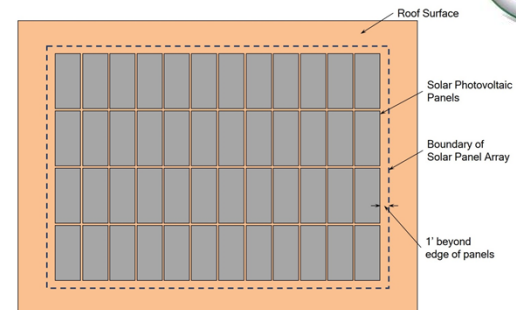
Chapter 12 Energy Systems



2018 IFC Significant Changes

LEARNING
center

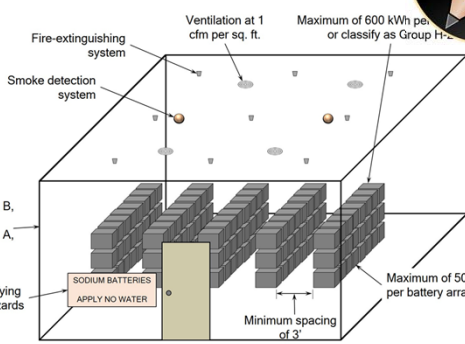
1204.5 Rapid Shutdown for Solar Photovoltaic Power Systems



2018 IFC Significant Changes

LEARNING
center

1206.2 Stationary Storage Battery Systems



The diagram illustrates a room containing several rows of battery racks. Labels point to various safety features: a fire-extinguishing system, a smoke detection system, ventilation at 1 cfm per sq. ft., and a maximum of 600 kWh per room or classification as Group H-2. A sign on the wall reads 'SODIUM BATTERIES' and 'APPLY NO WATER'. A note specifies 'Maximum of 50 kWh per battery array' and 'Minimum spacing of 3\''. A list of occupancy groups is provided: 1-HR in Groups B, F, M, S and U; 2-HR in Groups A, E, I and R.

- 1-HR in Groups B, F, M, S and U
- 2-HR in Groups A, E, I and R

Sign identifying hazards

SODIUM BATTERIES
APPLY NO WATER

Maximum of 50 kWh per battery array

Minimum spacing of 3'

Maximum of 600 kWh per room or classify as Group H-2

Ventilation at 1 cfm per sq. ft.

Fire-extinguishing system


Smoke detection system

IFC 2018 IFC Significant Changes

LEARNING center

Chapter 22 Combustible Dust Producing Operations

Chapter 22 Combustible Dust



A photograph shows a worker wearing a respirator and safety glasses, working with a power tool on a long wooden plank in a workshop setting. Dust is visible in the air.

IFC 2018 IFC Significant Changes

LEARNING center

Chapter 23 Motor Fuel-Dispensing Facilities and Repair Garages

2303.2.1 Height of Emergency Disconnect Switch



2018 IFC Significant Changes

LEARNING
center

2306.7.3.1 Protection from Vehicle Impact



2018 IFC Significant Changes

LEARNING
center

2309.6 Defueling of Hydrogen Fueled Vehicles



Photo courtesy of Shell Hydrogen



2018 IFC Significant Changes

LEARNING
center

2311.6 Repair of Vehicles Fueled by CNG and LNG



2018 IFC Significant Changes

LEARNING
center

2311.8 Repair of Vehicles Fueled by Lighter-than-air Fuels



2018 IFC Significant Changes

LEARNING
center

Chapter 24

Flammable Finishes

2403.2.1.3 Classified Electrical Areas Around Spray Booths



2018 IFC Significant Changes

2404.2 Spray Rooms and Spray Booths



2018 IFC Significant Changes

Chapter 28

**Motor Fuel-Dispensing
Facilities and Repair Garages**

**2810 Outdoor Pallet
Storage at Manufacturing
and Recycling Sites**



2018 IFC Significant Changes

LEARNING
center

Chapter 31

**Tents, Temporary Special
Event Structures and Other
Membrane Structures**

**Chapter 31 Umbrella
Structures**



2018 IFC Significant Changes

LEARNING
center

3103.3.1 Tents and Membrane Structures Used as Special Amusement Buildings



2018 IFC Significant Changes

LEARNING
center

3103., 3103.9 Structural Stability of Tents



2018 IFC Significant Changes

LEARNING
center

3104.2 Fabrics for Tents and Membrane Structures



2018 IFC Significant Changes

LEARNING
center

3105 Temporary Special Event Structures



2018 IFC Significant Changes

LEARNING
center

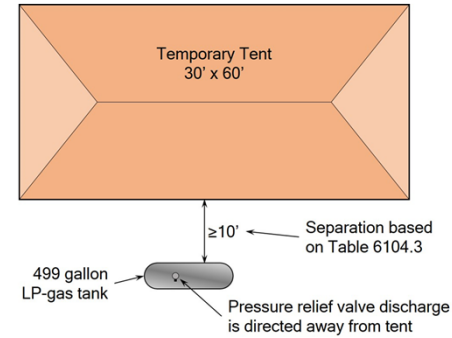
3106 Outdoor Assembly Events



2018 IFC Significant Changes

LEARNING
center

3107.3 LP-gas Containers and Tanks Adjacent to Tents and Membrane Structures



2018 IFC Significant Changes

LEARNING
center

Chapter 32

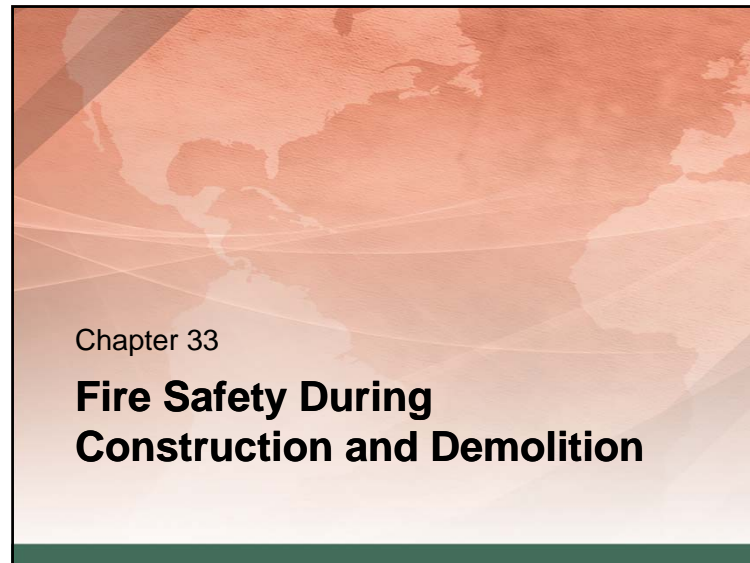
High-Piled Combustible Storage

Chapter 32 High-piled Combustible Storage



2018 IFC Significant Changes

LEARNING
center




3304.5 Fire Watch During Construction and Demolition




IFC 2018 IFC Significant Changes LEARNING center



Chapter 38 Higher Education Laboratories



**TABLE 3804.1.1
DESIGN AND NUMBER OF LABORATORY SUITES PER FLOOR**

FLOOR LEVEL		PERCENTAGE OF MAQ PER LAB SUITE	NUMBER OF LAB SUITES PER FLOOR	FIRE-RATING FOR FIRE BARRIERS
Above Grade Plane	21+	Not allowed	Not permitted	Not permitted
	16-20	25	1	2
	11-15	50	1	2
	7-10	50	2	2
	4-6	75	4	1
	3	100	4	1
	1-2	100	6	1
Below Grade Plane	1	75	4	1
	2	50	2	1
	Lower than 2	Not Allowed	Not Allowed	Not Allowed

IFC 2018 IFC Significant Changes LEARNING center

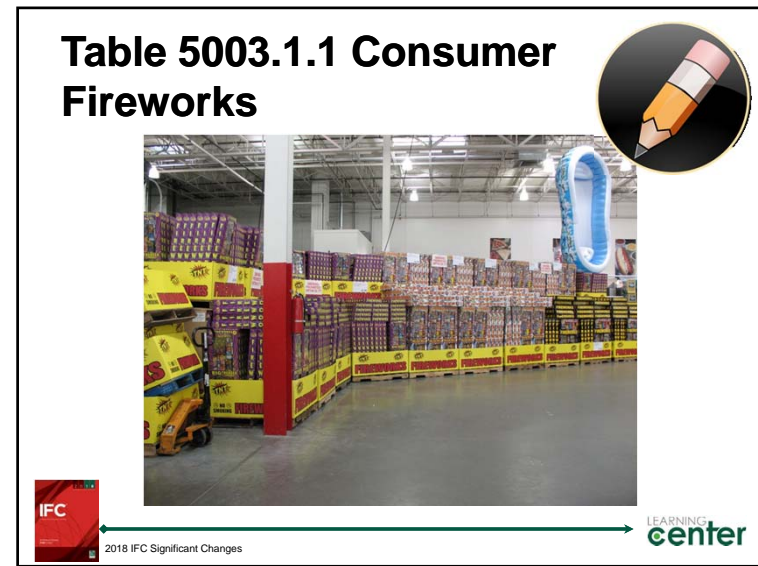
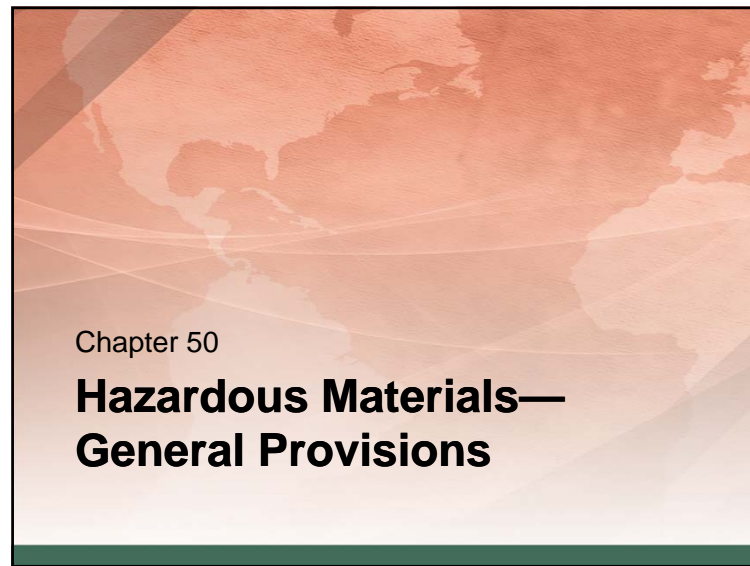
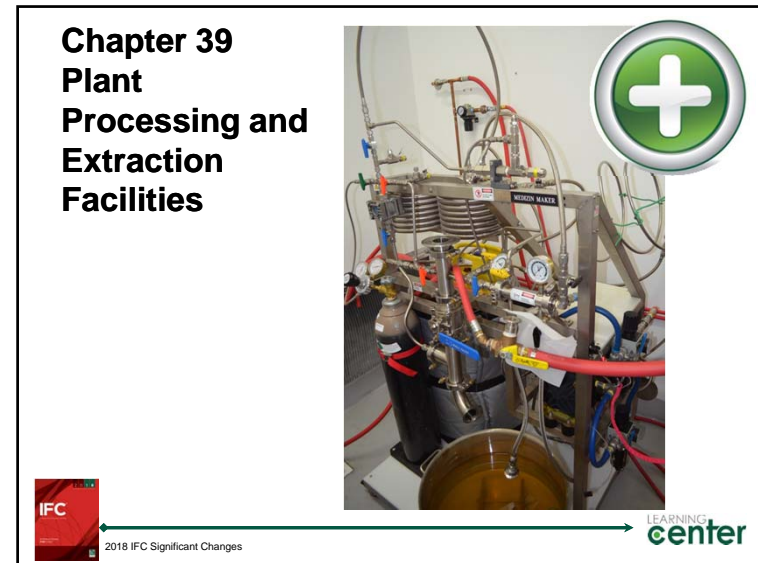
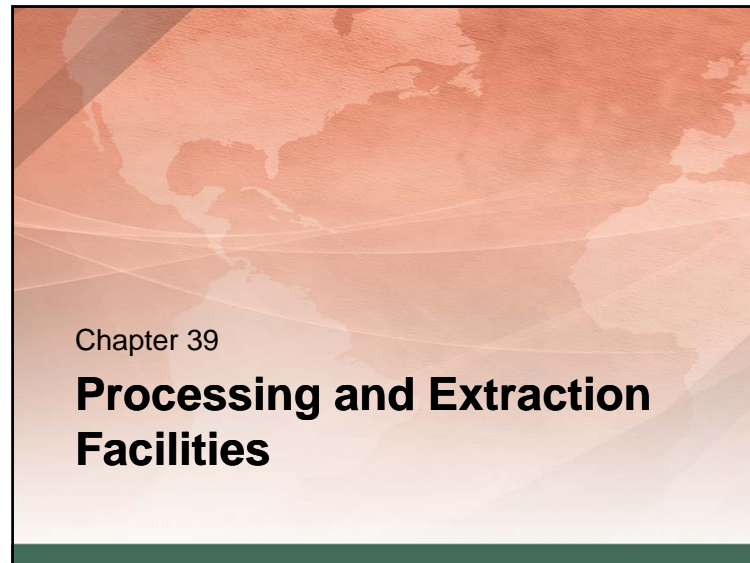


Table 5003.1.1(1) Maximum Allowable Quantity for Class 3 Oxidizers

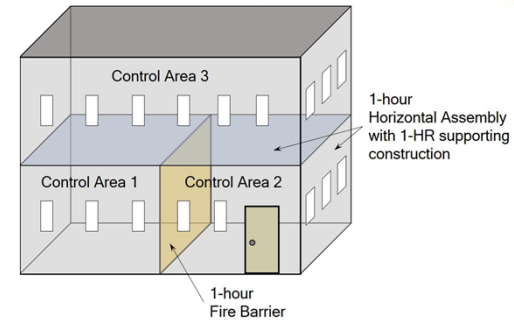


LEARNING
center



5003.8.3.4 Control Area Construction

Type IV construction with NFPA 13 sprinkler system

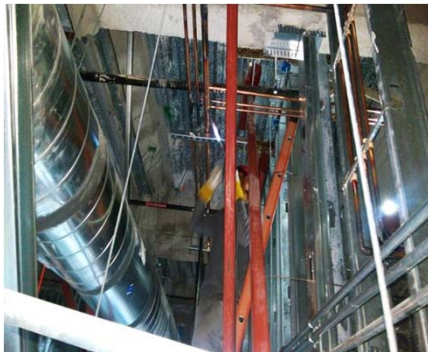


2018 IFC Significant Changes

LEARNING
center



5005.1.12 Protection of Hazardous Materials Piping Systems



2018 IFC Significant Changes

LEARNING
center



Chapter 51

Aerosols

5103.2 Aerosol Products in Plastic Containers



2018 IFC Significant Changes

LEARNING
center

5104.8 Aerosol Cooking Spray Products



2018 IFC Significant Changes

LEARNING
center

Chapter 53

Compressed Gases

5306.1 Medical Gas Storage



2018 IFC Significant Changes

LEARNING
center

5307.1 Liquid Carbon Dioxide Systems for Beverage Dispensing



2018 IFC Significant Changes

LEARNING
center

5307.4 Carbon Dioxide Enrichment Systems



2018 IFC Significant Changes

LEARNING
center

Chapter 57

Mobile Fueling Operations

5707 Mobile Fueling Operations



2018 IFC Significant Changes

LEARNING
center

Chapter 61

Liquefied Petroleum Gases

Table 6104.3 Location of LP-gas Containers



2018 IFC Significant Changes

LEARNING
center

Appendix E

Hazard Categories

E102.7 Hazard Classification of Oxidizers



2018 IFC Significant Changes

LEARNING
center

Appendix N

Trade Shows and Exhibits

Appendix N Trade Shows and Exhibits



2018 IFC Significant Changes

LEARNING
center

Discussion Activity



2018 IFC Significant Changes

LEARNING
center

Final Reflection

- Reflect on the day. What will you take back to the job and apply?
- What? What happened and what was observed in the training?
- So what? What did you learn? What difference did this training make?
- Now what? How will you do things differently back on the job as a result of this training?



2018 IFC Significant Changes

LEARNING
center

International Code Council is a Registered Provider with The American Institute of Architects Continuing Education Systems. Credit earned on completion of this program will be reported to CES Records for AIA members. Certificates of Completion for non-AIA members are available on request.

This program is registered with the AIA/CES for continuing professional education. As such, it does not include content that may be deemed or construed to be an approval or endorsement by the AIA of any material of construction or any method or manner of handling, using, distributing, or dealing in any material or product. Questions related to specific materials, methods, and services will be addressed at the conclusion of this presentation.



Copyright Materials

This presentation is protected by US and International Copyright laws. Reproduction, distribution, display and use of the presentation without written permission of the speaker is prohibited.

© International Code Council 2017



Thank you for participating

To schedule a seminar, contact:

The ICC Training & Education Department
1-888-ICC-SAFE (422-7233) Ext. 33818

or

E-mail: Learn@iccate.org



2018 IFC Significant Changes

